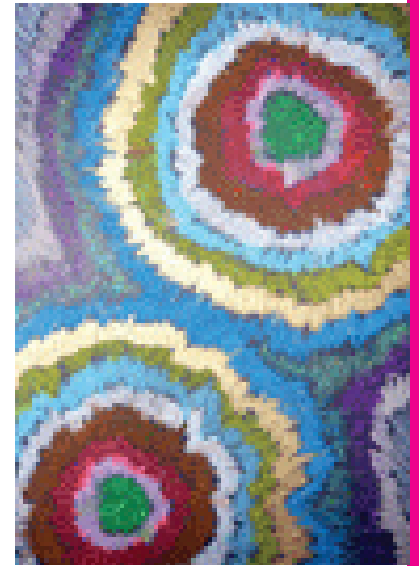


This conference is relevant to:

- ▶ School leaders, teachers, welfare staff and councils; education department policy and decision makers; education researchers and other academics; OSH providers; LLEN, VCAL/VCE providers and SFYS
- ▶ Staff and volunteers from neighbourhood houses, adult education and community centres, community halls, U3A, disability services
- ▶ Staff and managers in community, health, justice and welfare organisations
- ▶ Local and state government workers with interests in communities, arts and education
- ▶ Community based artists, artworkers and activists

This conference will explore the ways school communities and their facilities can contribute to creative and connected local communities, lifelong learning and successful local partnerships. Presentations, discussions and displays of local national and international initiatives will inform, inspire and energise participants.

Pamella, 2008, Grade 6
www.gallerysunshine.com



Places are limited. Please register by June 16 to ensure your place.

Conference fee \$55 / \$22 (includes GST)

Conference fee includes morning and afternoons teas and lunch.

Registration and program enquiries

Kim Dunphy

Cultural Development Network

Ph 03 9658 9976

contact@culturaldevelopment.net.au

Program subject to change.

For the latest details, visit:

www.culturaldevelopment.net.au

Williamstown Town Hall

104 Ferguson St., Williamstown
Melways 56 B8, five minutes walk from North Williamstown Station.

Fully wheelchair accessible venue.



Steering group

Kim Dunphy, Cultural Development Network;
Professor Maureen Ryan, Victoria University and Sunshine Gallery Everywhere;
Michaela Olijnyk, Brimbank City Council;
Geof Webb, VicHealth;
Tania Blackwell, Hobsons Bay City Council

Special thanks to

Isabel Jackson; David Everist;
Debbie Starpins, Dinjerra Primary School;
Footscray Community Arts Centre

Presented by:



Event partners
acknowledge
the support
of VicHealth:



The Cultural Development Network in partnership with Hobsons Bay City Council, Brimbank City Council, VicHealth, Victoria University, Gallery Sunshine Everywhere and Footscray Community Arts Centre

Present this one day conference

Connecting Schools & Communities

Exploring the use of schools and their facilities for creative community outcomes

How are school communities and their facilities contributing to creative and connected local communities, lifelong learning and successful local partnerships?

Monday June 23
9:30 am – 5:00 pm

Williamstown Town Hall
104 Ferguson Street, Williamstown

International keynote speaker

Providing creative opportunities through successful partnerships with schools, sporting and community organisations



Lisa Fitzhugh is the founder and Executive Director of Artscorps, a non-profit youth development program that partners with schools and community organisations to bring free after-school arts classes to low-income young people in Seattle USA. Since its inception in 2000, Arts Corps has grown from an enrolment of 400 students at 10 partner sites in 2000 to

2,700 students in 139 quarterly classes at 31 partner facilities in 2008. Artscorps has been deemed a US national leader in excellent arts programming by Harvard University's Project Zero, a graduate research program on arts education and creativity and the National Partnership for Quality After-school Learning.

www.artscorps.org

Lead speakers

School-community partnerships. The policy perspective: outcomes for the whole community
Michael Tudball, Director, School and Community Partnerships, Department of Planning and Community Development

Learnings from research: How do our communities benefit through developing creative partnerships?

Professor Maureen Ryan, Victoria University, and Gallery Sunshine Everywhere;
Helen Thomas, John Stafford, and
Lesley Hyde, Schools as Core Social Centres, Catholic Education Office

Presentations will include

- ▶ Arts and Sport in After-School Programs, **Kate Simkovic**, Statewide Coordinator, National Active After-School Program
- ▶ The Workguide: arts in community projects, **Mandy Grinblat**, Arts Victoria
- ▶ Sound Links: Musical communities in Victoria and potential for collaborating with schools
Dr Brydie-Leigh Bartleet, Griffith University
- ▶ The Quick Sell: Pitch your project or idea to the audience in two minutes

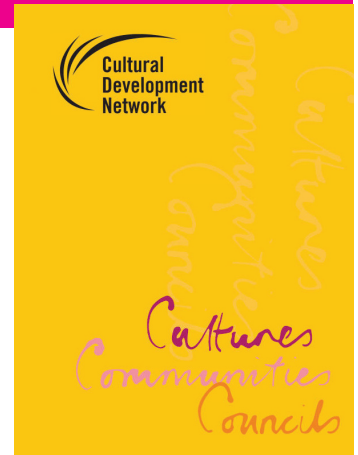
- ▶ Hypothetical: Creative Partnerships Between Schools and Communities, Moderator **Geof Webb**, with panellists including **Jerril Rechter**, Footscray Community Arts Centre, **Danny Colgan**, Hobsons Bay City Council, **Dean Michael**, Brimbank City Council, **Fay Chomley**, Arts Victoria

If you would like to be included in this activity, please contact Kim Dunphy on kim.dunphy@culturaldevelopment.net.au.

Please note: this program is subject to change. Visit: www.culturaldevelopment.net.au/cdevents.htm, for the latest information.

The Cultural Development Network is an independent non-profit group that links communities, artists, local councils and organisations across Victoria. We advocate a stronger role for participatory arts and cultural expression to build a healthier, more engaged and sustainable society.

www.culturaldevelopment.net.au



Tax Invoice / Registration Form

CDN ABN 57 399 480 298

Full payment must accompany your registration

Name:

Group / Organisation / artform:

Address:

Phone: Email:

Special needs / dietary requirements (please specify):

Please tick this box if you DO NOT give your permission for your name, email address and mobile phone number to be included on a list in delegates' pack.

Information to share? Do you have flyers, brochures or other material you would like to go in conference packs? Please bring up to 100 copies on the day to share with delegates.

Connecting Schools & Communities Conference June 23, 2008

Williamstown Town Hall ▶ Please register by June 16 to ensure we can cater for you

Payment method Conference fee: \$55 \$22 * (includes GST)

EFT to Cultural Development Network 083 004 55 330 6894

By post: Cheque VISA MASTERCARD

Cheques payable to 'Cultural Development Network'

Cardholder's name:

Credit card number:

Expiry date: Amount of: CCV number:

Cardholder's signature:

Please return this form to Cultural Development Network, PO Box 324 Flinders Lane 8009. Or by fax to (03) 9658 8436

*Concession price is available to full time students, government concession or pension card holders, and artists on low income whose attendance is not funded by an organisation.